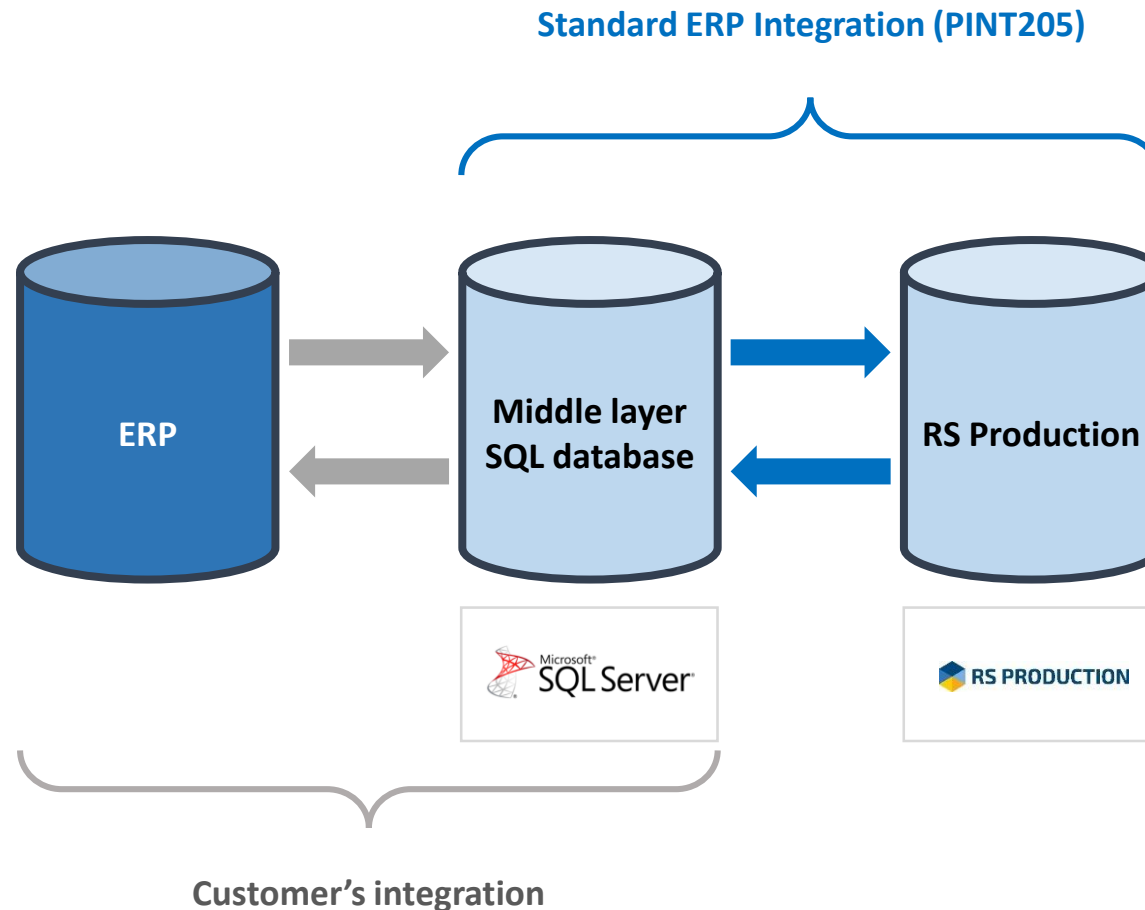


Guide to Standard ERP integration (PINT205)

This is how the standard integration works



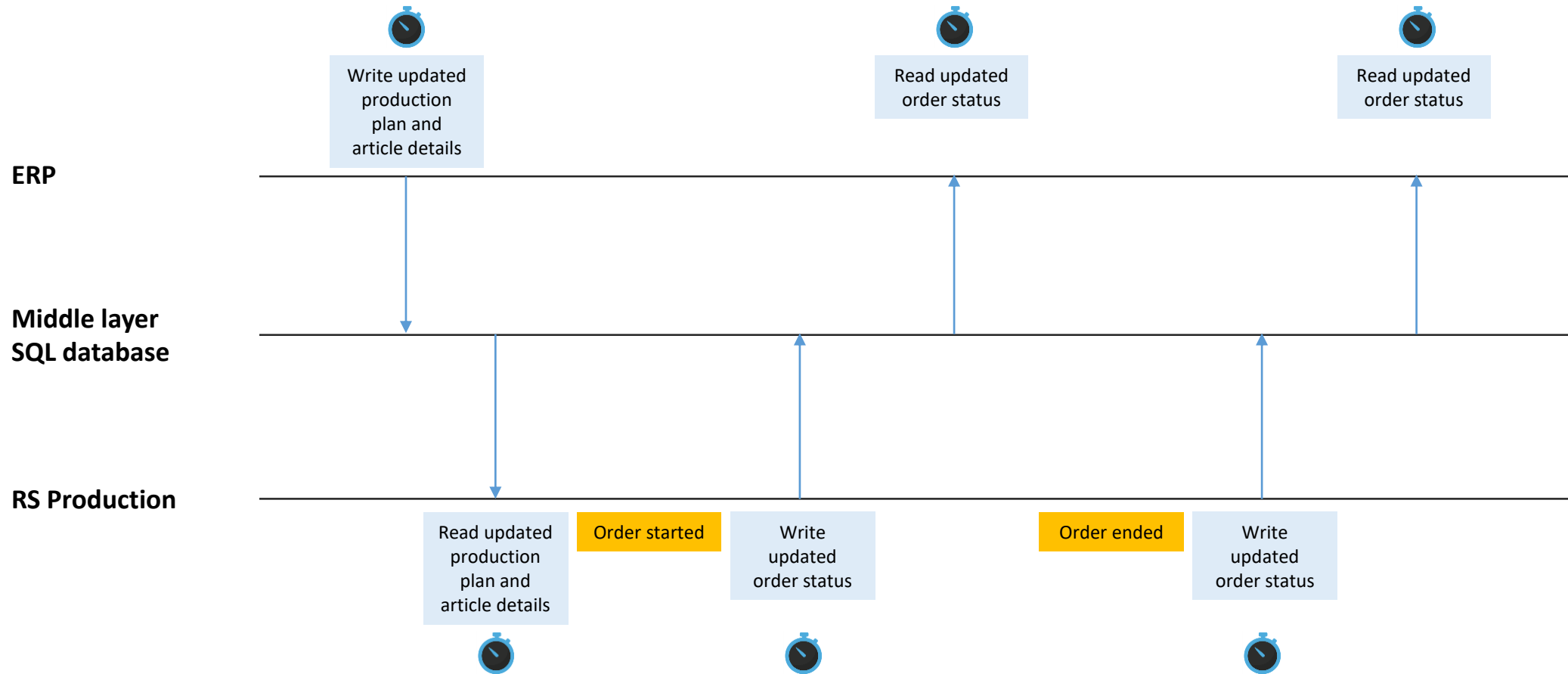
The customer is responsible for setting up the integration between the ERP-system and the middle layer SQL. That means writing the production plan to the standard SQL-table structure and reading production order reports from the same SQL-table.

The integration is based on a standard SQL-table middle layer. The standard integration takes care of everything between the middle layer database and RS Production.

Guide to Standard ERP integration (PINT205)

This is how the standard integration works

This is an example of a typical flow for a two-way integration

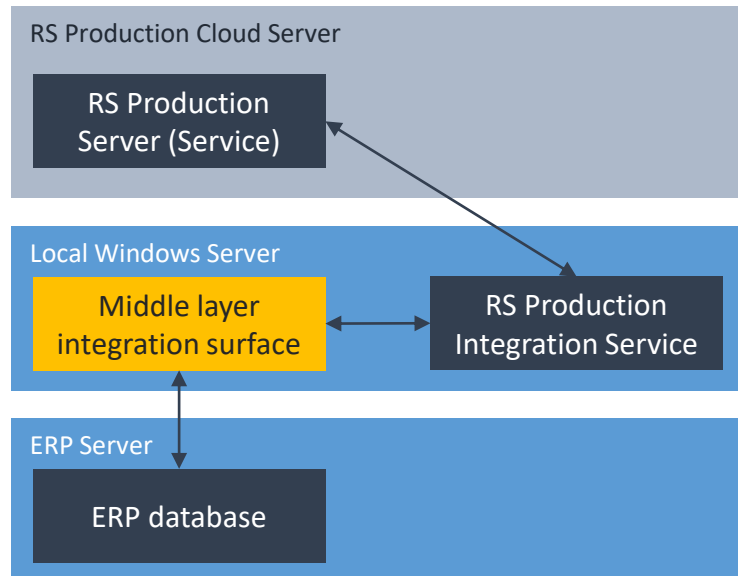


Guide to Standard ERP integration (PINT205)

Where should the middle layer database be placed?

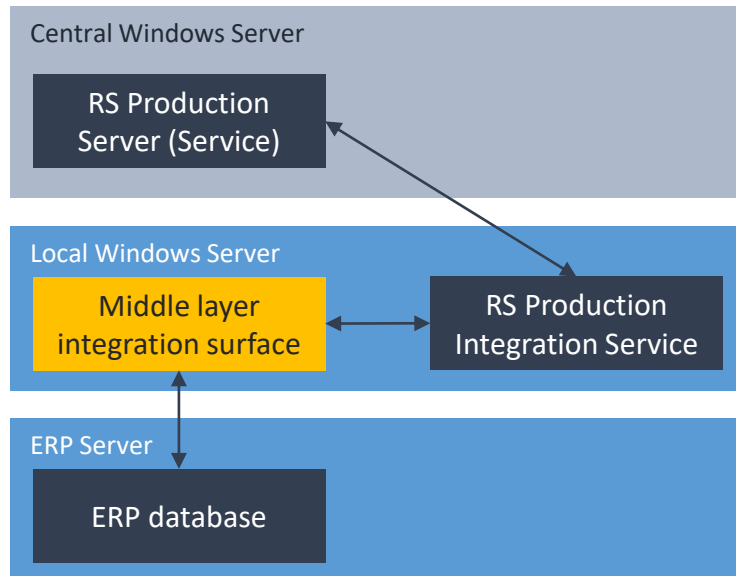
A RS Production Cloud Server

The middle layer database should be placed on a local Windows server. It can be on the same Windows that runs the ERP or a separate Windows server.



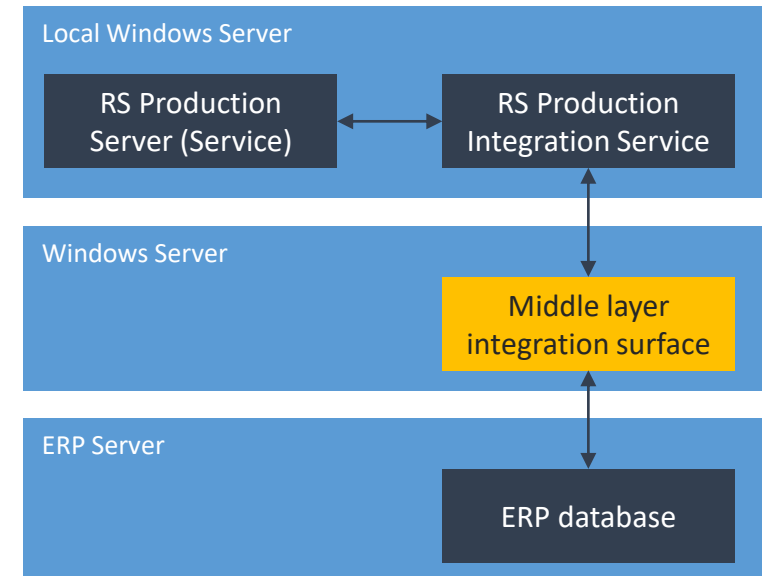
B Central Server

The middle layer database should be placed on a local Windows server. It can be on the same Windows that runs the ERP or a separate Windows server.



C Local Server

The middle layer database should be placed on a local Windows server. It can be on the same Windows that runs the ERP or RS Production or a separate Windows server.

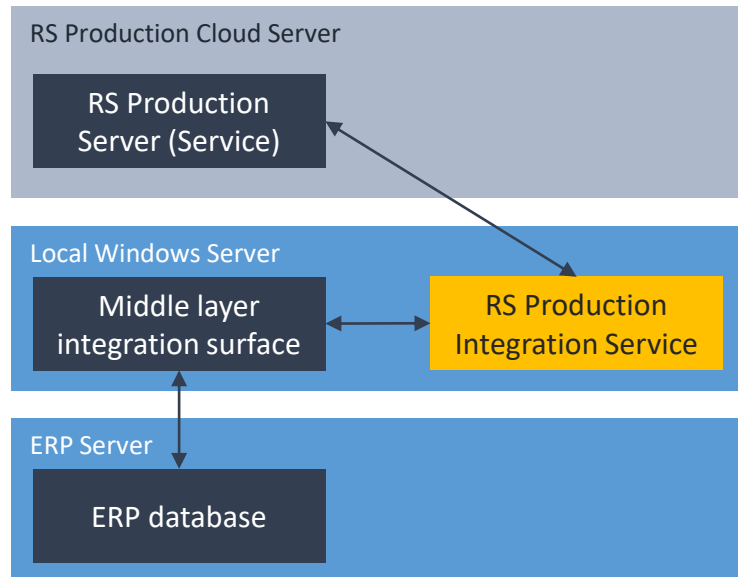


Guide to Standard ERP integration (PINT205)

Where should the RS Production Integration Service be installed?

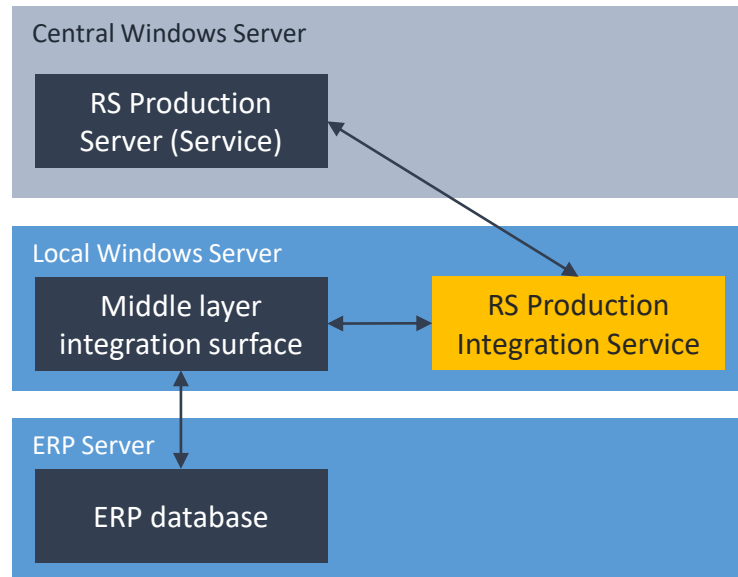
A RS Production Cloud Server

To run an integration between RS Production and an ERP system you will need to install a RS Production Integration Service on a PC close to your ERP-system.



B Central Server

To run an integration between RS Production and an ERP system you will need to install a RS Production Integration Service on PC close to your ERP-system.



C Local Server

The Integration Normally runs on the same PC that runs the RS Production Server.

